



MONTHLY MEMBERSHIP PROGRESS REPORT

District 318 E

Results as of: 01/31/2019

GMT: N S SANKAR

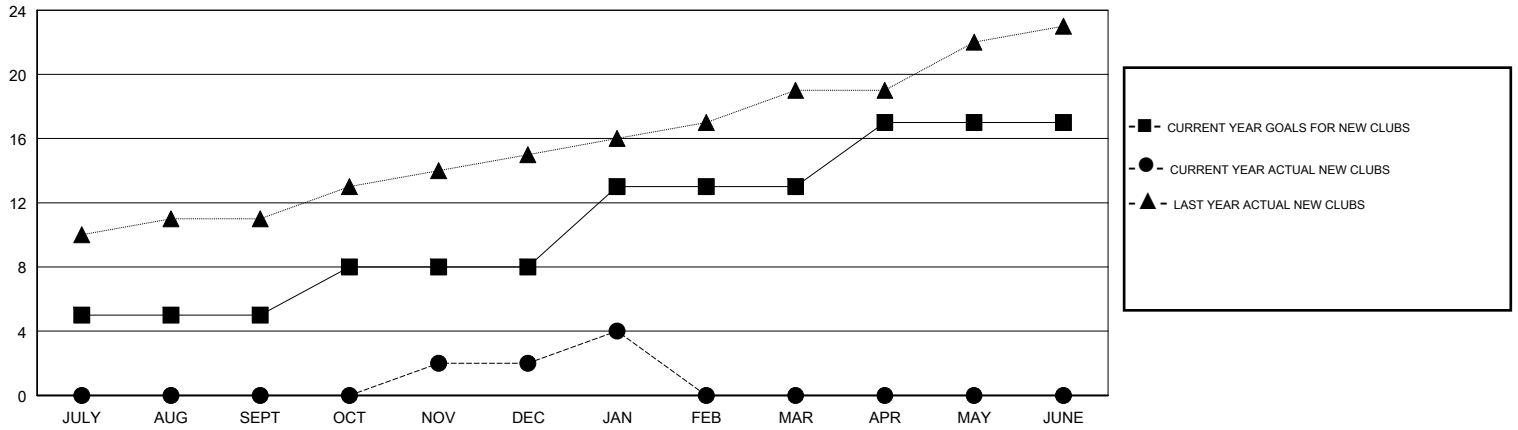
LOCATION INDIA

GMT CA

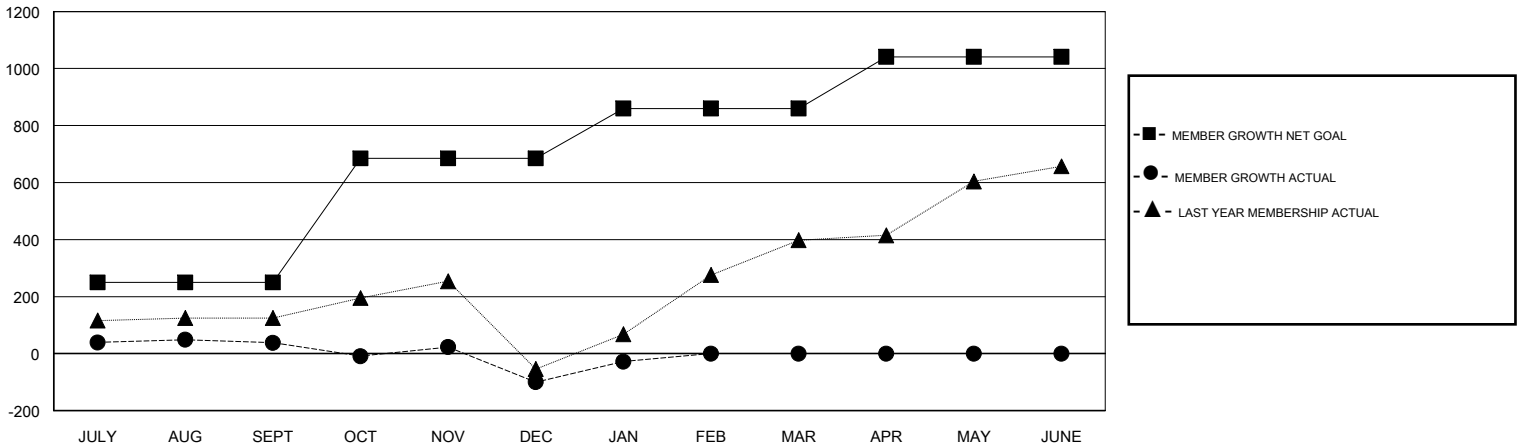
Clubs			
RESULTS FOR 2018-2019			
QUARTER	NEW CLUB GOAL	NEW CLUBS	DROPPED CLUBS
JULY/AUG/SEPT	5	0	0
OCT/NOV/DEC	3	2	11
JAN/FEB/MAR	5	2	0
APR/MAY/JUNE	4	0	0

Members			
RESULTS FOR 2018-2019			
QUARTER	MEMBER GROWTH NET GOAL	MEMBER GROWTH ACTUAL	DROPPED MEMBERS ACTUAL (including transfers)
JULY/AUG/SEPT	250	207	163
OCT/NOV/DEC	435	293	423
JAN/FEB/MAR	175	115	38
APR/MAY/JUNE	181	0	0

GOALS AND ACTUAL NEW CLUBS CUMULATIVE



GOALS AND ACTUAL MEMBERS CUMULATIVE



DROPPED CLUBS: 11	78 CLUBS OF 152 ADDED 1 OR MORE NEW MEMBERS	<u>GENDER DISTRIBUTION</u>	
DROPPED MEMBERS		MALE	4,516 (78.40%)
DECEASED	14	FEMALE	1,244 (21.60%)
CLUB CANCELLED	267	Women Percentage Fiscal Year Goal: 10%	
OTHER	343	TOTAL FAMILY UNIT MEMBERS	2,139
TOTAL	624	FAMILY MEMBERS PAYING HALF DUES	1,116

[CLICK HERE FOR CUMULATIVE MEMBERSHIP DATA](#)